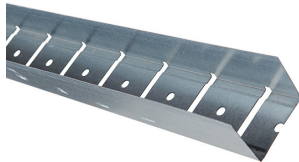








Product data sheet

Rigips wall profile UW 50 prepunched

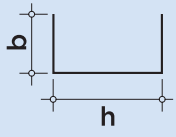


Product description: Profile made of steel according to DIN EN 10346. Material tolerances according to DIN EN 10143. The profiles are pre-punched at the web. One flange of the profile has to be slit on site.

Area of application: For creating curved substructures in gypsum board systems.

| | | | | | |
|--|--|--|--|--|--|
|  |  |  |  |  |  |
| Oberfläche glatt | Korrosions- schutz Z100 | Anwendung Innenraum | Baustoffklasse A1 | Blechdicke 0,6 mm | Lagerung |

Technical specifications

| Parameters | Sign | Value | UOM | Drawing |
|--------------------|---------|-------|-----|---|
| Dimensions | | | | |
| Metal thickness | t | 0.6 | mm |  |
| Profile height | h | 50.0 | mm | |
| | Nominal | 50 | mm | |
| Profile width | b | 39.8 | mm | |
| | Nominal | 40 | mm | |
| Length | l | 3,000 | mm | |
| Round hole | Ø | 6.5 | mm | |
| Round hole spacing | | 100 | mm | |
| Slot spacing | | 50 | mm | |

| Parameters | Sign | Value | Unit | Certification |
|----------------------|------|------------------------|------|---------------|
| Material | | | | |
| Type of material | | Galvanised sheet steel | | EN 10346 |
| Material | | DX51D+Z | | |
| Corrosion protection | | Z100 | | EN 14195 |
| Surface | | Smooth | | |

The information in this publication is based on our current technical knowledge and experience. In view of the many factors that may affect processing and application of our products, these data do not relieve the users of our products from the responsibility of carrying out their own inspections and tests, as they only represent general guidelines. They neither do imply any legally binding assurance of certain properties or of suitability for a particular application. It is the responsibility of those to whom we supply our products to ensure that any proprietary rights and existing laws and regulations are observed. We reserve the right to modifications in the interests of technical advancement without prior notice.

Product data sheet

Rigips wall profile UW 50 prepunched

| Parameters | Sign | Value | Unit | Certification |
|------------------|------|-------------------------------------|------|---------------|
| Notes | | | | |
| Storage | | Dry Flat and level Air access | | |
| Shelf Life | | Unlimited | | |
| Form of delivery | | According to Pricelist | | |
| Waste key | | 17 04 05 | | |

The values listed in this product data sheet only reflect the performance characteristics of the products. In addition, gypsum plaster systems have structural and structural properties, which can be found in our system documentation (e. g. Planen und Bauen).

The information in this publication is based on our current technical knowledge and experience. In view of the many factors that may affect processing and application of our products, these data do not relieve the users of our products from the responsibility of carrying out their own inspections and tests, as they only represent general guidelines. They neither do imply any legally binding assurance of certain properties or of suitability for a particular application. It is the responsibility of those to whom we supply our products to ensure that any proprietary rights and existing laws and regulations are observed. We reserve the right to modifications in the interests of technical advancement without prior notice.